



CBCD

Single Point Load Cell (100kgf ~ 500kgf)

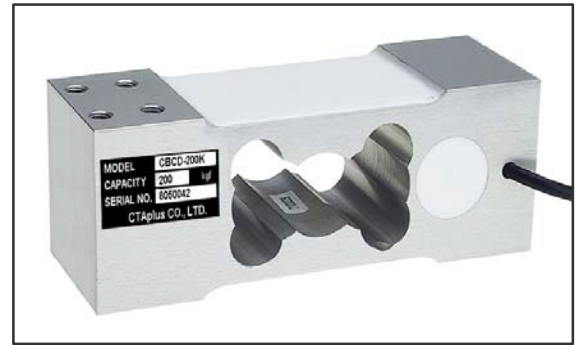
www.ctaplus.com

FEATURE

- Low cost
- Off center compensated
- Protection class IP65

SPECIFICATION

MODEL	CBCD
Rated capacity (R.C.)	100, 150, 250, 300, 500 kgf
Rated output (R.O.)	2.0 ± 0.2 mV/V
Zero balance	0 ± 0.1 mV/V
Combined error	0.03% R.O.
Repeatability	0.01% R.O.
Creep for 30 min	0.03% R.O.
Temp. effect on zero value	0.028% / 10°C
Temp. effect on output value	0.014% / 10°C
Excitation recommended	10V DC
Excitation maximum	15V DC
Terminal resistance, input	400 ± 20Ω
Terminal resistance, output	350 ± 3.5Ω
Insulation resistance	> 2000MΩ@50V DC
Compensated temperature range	-10 to +40 °C
Operating temperature range	-20 to +80 °C



◆ Mounting

Socket-head cap screw M8 x 1.25(10.9)

Tightening torque : 29Nm

◆ Maximum Platform Size

400 x 600mm (W x L)

◆ Material

Anodized Aluminum

◆ Cable

Braided shield 4-wire round cable with PVC-jacket

DIMENSION

