



CTS

Tension Load Cell (1tf ~ 100tf)

www.ctaplus.com

FEATURE

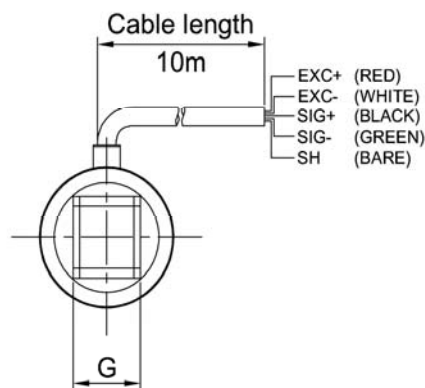
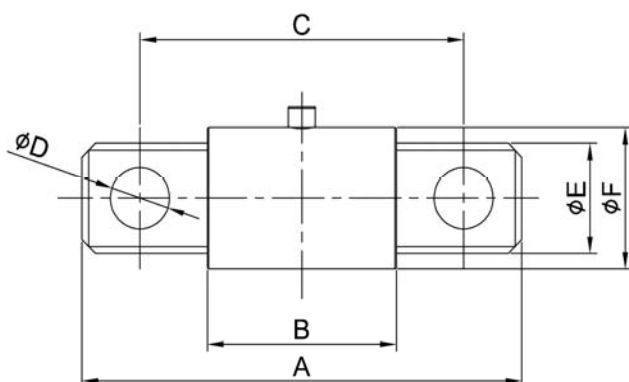
- Crane weighing, tower testing
- Tension load cell

SPECIFICATION

MODEL	CTS
Rated capacity (R.C.)	1, 2, 3, 5, 10 tf 20, 30, 50, 70, 100 tf
Rated output (R.O.)	1.0 mV/V \pm 0.5%
Zero balance	0.2% R.O.
Combined error	0.5% R.O.
Repeatability	0.1% R.O.
Creep for 30 min	0.1% R.O.
Temp. effect on zero value	0.04% / 10°C
Temp. effect on output value	0.1% / 10°C
Excitation recommended	10V DC
Excitation maximum	15V DC
Terminal resistance, input	350 \pm 10 Ω
Terminal resistance, output	350 \pm 5 Ω
Insulation resistance	> 2000M Ω @50V DC
Compensated temperature range	-10 to +40°C
Operating temperature range	-20 to +80°C



◆ Cable
Braided Shield 4-wire round cable
with PVC-jacket



DIMENSION

Rated Capacity	ϕ A	B	C	ϕ D	ϕ E	ϕ F	G
1tf	140	70	110	18	32	50	20
2tf	163	70	120	22	39	50	25
3tf	180	63	128	27	49	60	30
5tf	234	100	168	37	59	70	40
10tf	310	100	210	37	89	100	40
20tf	400	120	285	62	120	135	70
30tf	428	128	288	64	120	135	75
50tf	503	148	342	75	145	160	98
70tf	620	149	410	100	170	210	100
100tf	600	166	380	110	180	180	100