



# TCSW

## Socket Wrench Type Rotary Torque Transducer (20kgf·cm ~ 2000kgf·cm)

[www.ctaplus.com](http://www.ctaplus.com)

### FEATURE

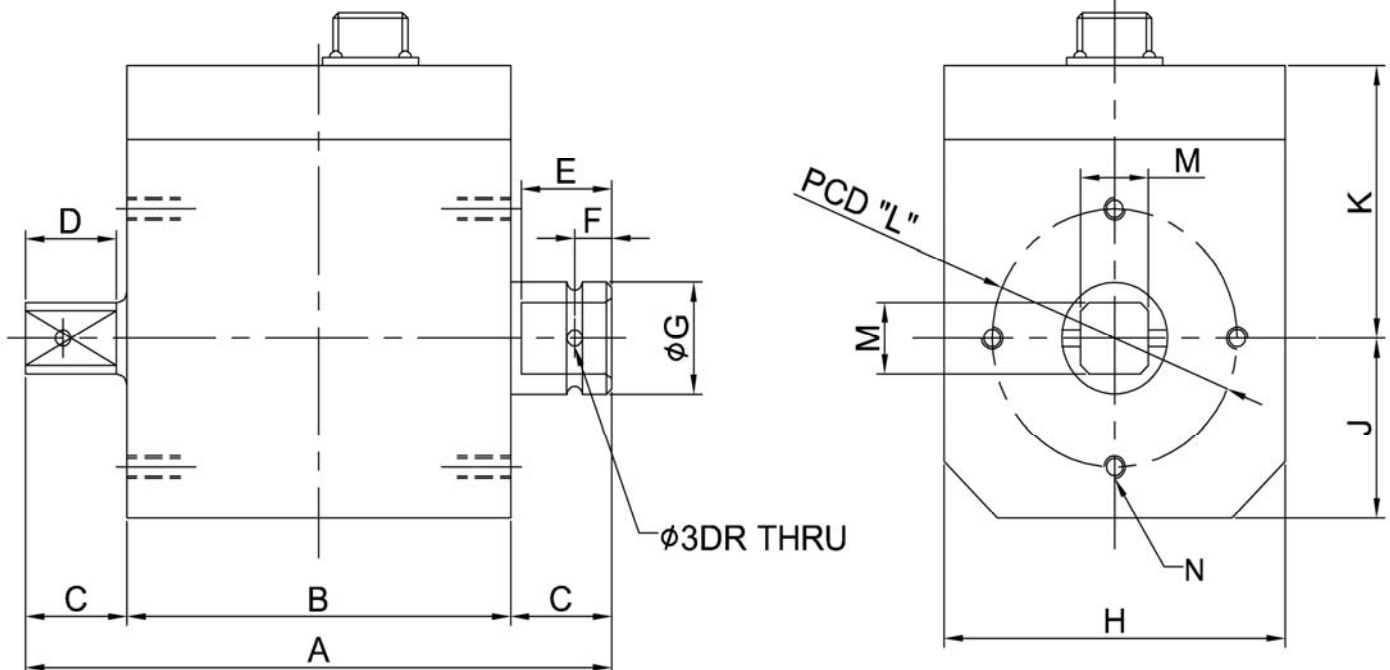
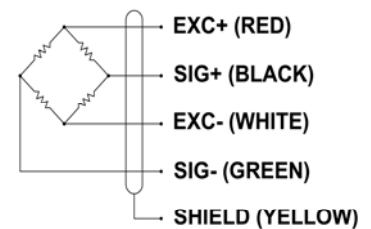
Model TCSW socket wrench torque sensors are used for fast, accurate measurement of bolt or nut wrenching torques. This model operates in both directions so tightening and break-away torques can be measured. It can also be used to check the calibration of mechanical torque wrenches.

### SPECIFICATION

MODEL	TCSW
Rated capacity (R.C.)	20, 50, 100, 200, 500, 1000, 2000 kgf·cm
Rated output (R.O.)	1.5 ± 0.35mV/V
Non-linearity	≤ 0.3% R.O.
Hysteresis	≤ 0.3% R.O.
Non-repeatability	≤ 0.3% R.O.
Terminal resistance, input	350Ω ± 1%
Terminal resistance, output	350Ω ± 1%
Insulation resistance	> 2000MΩ
Temp. effect on rated output	≤ 0.1% LOAD/10°C
Temp. effect on zero balance	≤ 0.1% R.O./10°C
Excitation Voltage	10V DC
Safe overload	150% R.C.
Cable	φ7 shield 5m



### WIRING INFORMATION



### DIMENSION

Rated Capacity	Socket size	A	B	C	D	E	F	φG	H	J	K	φL	M	N
20, 50 kgf·cm	1/4"	85	60	12.5	11	11	4	14	57	30	52.5	42	6.35	2x4-M4TAP DP8
100, 200 kgf·cm	3/8"	93	63	15	13	13	5.5	17	57	30	52.5	42	9.53	2x4-M4TAP DP8
500 kgf·cm	1/2"	110	72	19	17	17	7	20	64	32	48.5	46	12.7	2x4-M4TAP DP8
1000, 2000 kgf·cm	3/4"	123	75	24	21	21	10	34	84	41	57.5	68	19.1	2x4-M5TAP DP10