



TRFF

Flange Type Rotary Torque Transducer (20kgf·m ~ 300kgf·m)

www.ctaplus.com

FEATURE

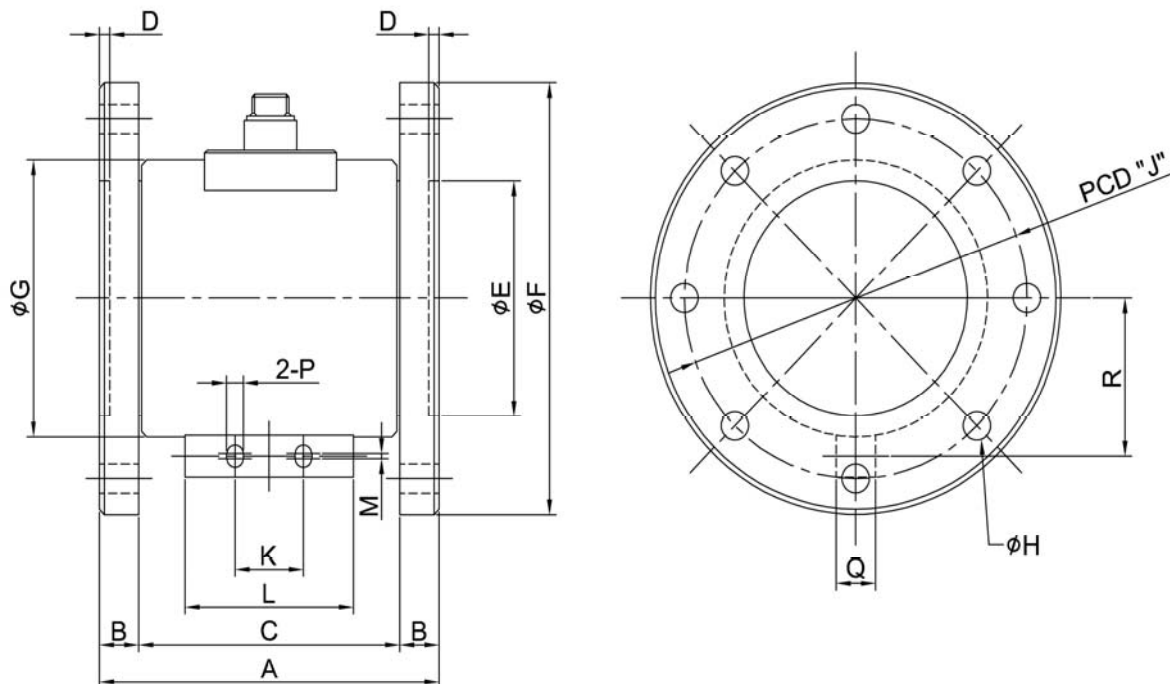
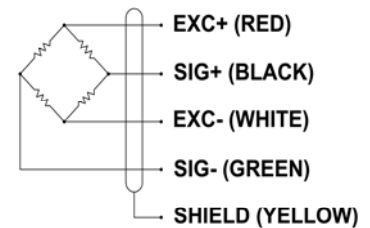
Model TRFF is used to measure continuous torque of rotating products as strain gauge method, has high accuracy by using brush and slipping and can be installed with easy as flange type.

SPECIFICATION

MODEL	TRFF
Rated capacity (R.C.)	20, 50, 100, 300kgf·m
Rated output (R.O.)	1.5 ± 0.35mV/V
Non-linearity	≤ 0.3% R.O.
Hysteresis	≤ 0.3% R.O.
Non-repeatability	≤ 0.3% R.O.
Terminal resistance, input	350Ω ± 1%
Terminal resistance, output	350Ω ± 1%
Insulation resistance	>2000MΩ
Temp. effect on rated output	≤ 0.1% LOAD/10°C
Temp. effect on zero balance	≤ 0.1% R.O./10°C
Excitation Voltage	10V DC
Safe overload	150% R.C.
Cable	φ7 shield 5m



WIRING INFORMATION



DIMENSION

Rated Capacity	A	B	C	D	φE	φF	φG	φH	J	K	L	M	P	Q
20kgf·m	129	15	99	4	65	128	85	6-φ6.6	105	26	64	2	6.5	12
50kgf·m	129	15	99	4	70	138	90	6-φ6.6	115	26	64	2	6.5	12
100kgf·m	129	15	99	4	85	156	100	8-φ10.5	130	26	64	2	6.5	15
300kgf·m	147	20	107	4	100	175	120	8-φ10.5	146	26	64	2	6.5	15