



TRF

Flange Type Rotary Torque Transducer (5kgf·m ~ 300kgf·m)

www.ctaplus.com

FEATURE

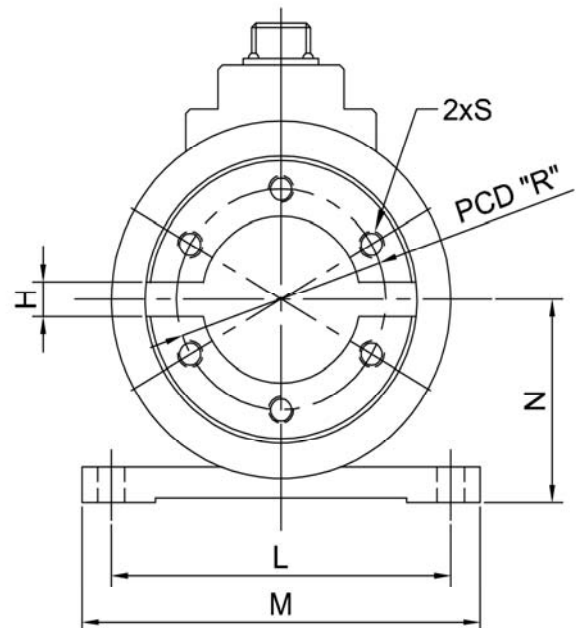
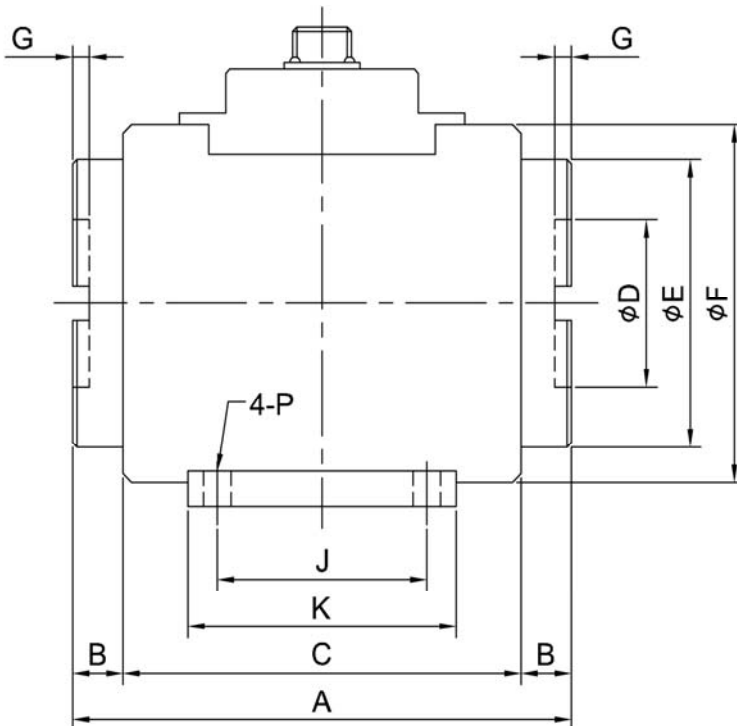
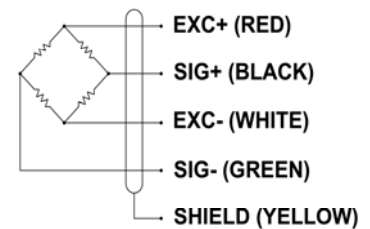
Model TRF is used to measure torque of auto engine and various motor as rotating torque sensor of flange type.

SPECIFICATION

MODEL	TRF
Rated capacity (R.C.)	5, 10, 20, 50, 100, 200, 300kgf·m
Rated output (R.O.)	1.5 ± 0.35mV/V
Non-linearity	≤ 0.3% R.O.
Hysteresis	≤ 0.3% R.O.
Non-repeatability	≤ 0.3% R.O.
Terminal resistance, input	350Ω ± 1%
Terminal resistance, output	350Ω ± 1%
Insulation resistance	>2000MΩ
Temp. effect on rated output	≤ 0.1% LOAD/10°C
Temp. effect on zero balance	≤ 0.1% R.O./10°C
Excitation Voltage	10V DC
Safe overload	150% R.C.
Cable	φ7 shield 5m



WIRING INFORMATION



DIMENSION

Rated Capacity	A	B	C	φD	φE	φF	G	H	J	K	L	M	N	φP	φR	S
5, 10, 20kgf·m	119	12	95	38	65	81	2.5	8	50	64	81	95	46	6.5	50	6-M6 DP15
50kgf·m	125	13	99	40	76	88	4	10	50	64	88	102	49.5	6.5	60	6-M6 DP15
100kgf·m	125	13	99	52	86	100	4	16	50	68	100	118	58	8.5	68	6-M8 DP15
200, 300kgf·m	141	18	105	60	102	116	4	16	50	68	116	134	66	8.5	85	6-M8 DP15