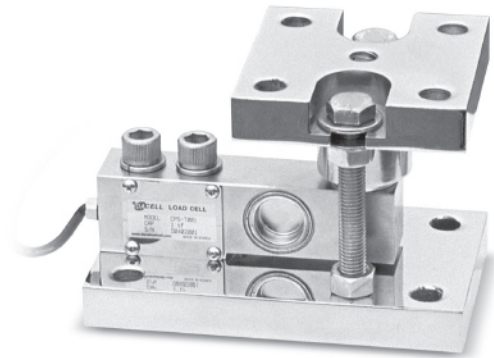


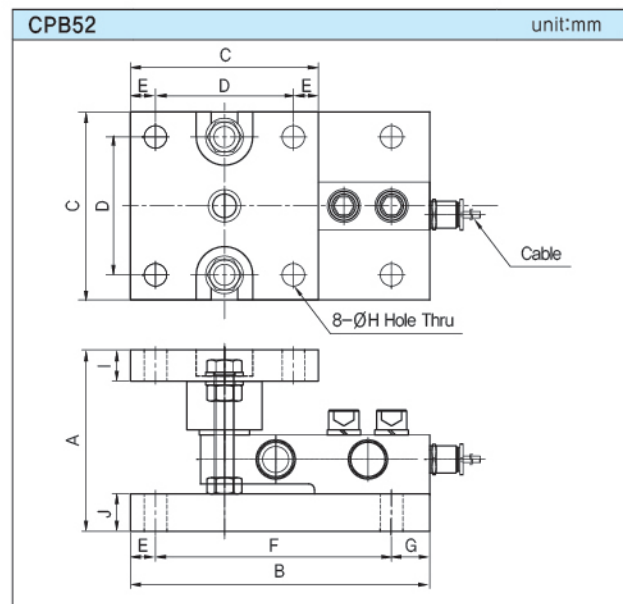
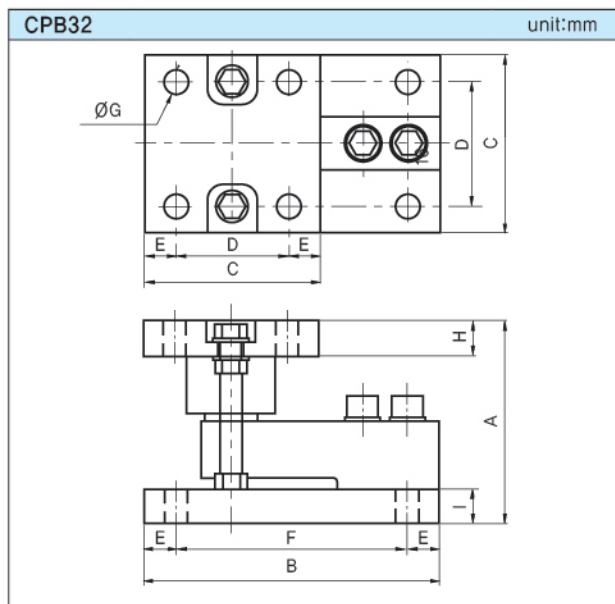
Weighing Module

> Model CPB32, CPB42, CPB52

Hopper, Bin, Tank weigh module Stainless Steel or Zinc Plated Steel Mounting Kit.



ORDERING INFORMATION	
CPB32 - T2	
Model	CAPACITY(K300, K500, T1, T2, T3, T5)
CPB32 :	CP loadcell + Zinc Plateel Steel Mtg Kit
CPB42 :	CPS loadcells + Zinc Plateel Steel Mtg Kit
CPB52 :	CPS loadcells + Stainless Steel Mtg Kit



>SPECIFICATIONS

Specifications	Accuracy	
	CBC32, CBC42	CBC52
Rated capacity(R.C)	300kgf, 500kgf, 1tf, 2tf, 3tf, 5tf	500kgf, 1tf, 2tf, 3tf, 5tf
Rated output(R.O)	2mV/V±0.1%	2mV/V±0.1%
Nonlinearity	0.02% of R.O.	0.03% of R.O.
Hysteresis	0.02% of R.O.	0.03% of R.O.
Repeatability	0.01% of R.O.	0.03% of R.O.
Creep	0.02% of R.O.	0.02% of R.O.
Zero balance	±1% of R.O.	±5% of R.O.
Temperature effect on rated output	0.02% of LOAD/10°C	0.02% of LOAD/10°C
Temperature effect on zero balance	0.05% of R.O./10°C	0.05% of R.O./10°C
Temperature range, compensated	-10°C to 70°C	-10°C to 40°C
Temperature range, safe	-20°C to 80°C	-20°C to 70°C
Terminal resistance, input	350Ω ±1%	350±30Ω
Terminal resistance, output	350Ω ±1%	350±5Ω
Insulation resistance bridge	2000MΩ	2000MΩ
Excitation recommended	10V	10V
Safe overload	150% R.C.	150% R.C.
Cable length	Ø5mm, 4core, 3m	Ø7mm, 4core, 3m

>DIMENSIONS TABLE(CPB32)

Capacity	A	B	C	D	E	F	G	H	I	Weight(kg)
300kg (2.942kN)	108	168	106	70	18	132	11.5	15	20	8
500kg~2tf (4.903kN~19.61kN)	116	168	106	70	18	132	13.5	21	20	9
3tf~5tf (29.42kN~49.03kN)	145	225	150	110	20	185	18	25	30	16

>DIMENSIONS TABLE(CPB52)

Capacity	A	B	C	D	E	F	G	H	I	J
500kg~2tf (4.903kN~19.61kN)	115	183.3	106	70	18	136.5	28.8	13.5	21	20
3tf (29.42kN)	145	238.9	150	110	20	188.4	30.5	18.0	25	30
5tf (49.03kN)	145	238.9	150	110	20	188.4	30.5	20.5	25	30

★ Specifications are subject to change without notice.