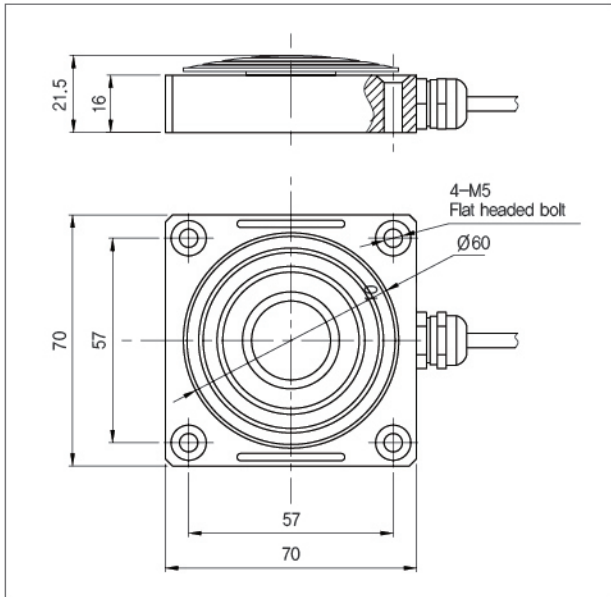


Pedal Effort Load Cell

> Model CS285

Made of aluminum alloy material.
Used to measure the brake pedal force in the car development industry.
Protection Class IP65

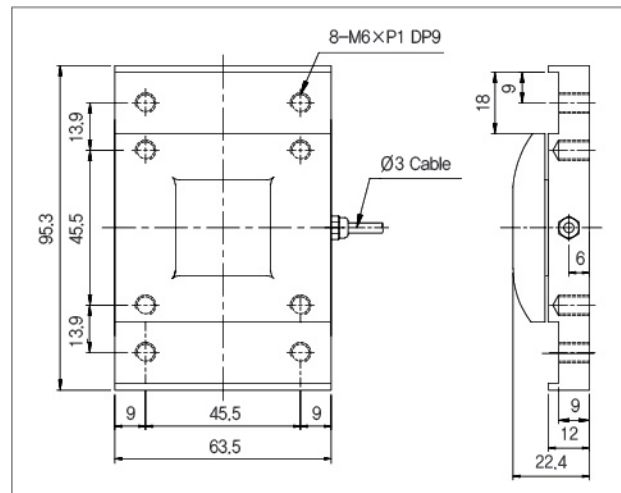
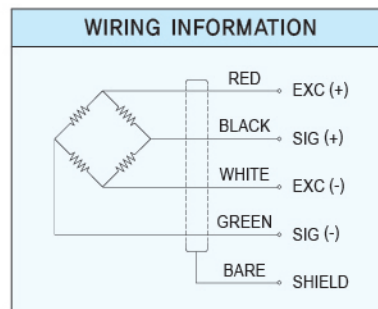


>SPECIFICATIONS

Specifications	Accuracy
Rated capacity(R.C)	1000N, 2000N
Rated output(R.O)	1.5mV/V±10%
Nonlinearity	≤ 0.5% of R.O.
Hysteresis	0.1% of R.O.
Repeatability	0.1% of R.O.
Creep(30min)	0.2% of R.O.
Zero balance	±2% of R.O.
Temperature effect on rated output	0.05% of LOAD/10°C
Temperature effect on zero balance	0.03% of R.O./10°C
Temperature range, compensated	-10°C to 60°C
Temperature range, safe	-20°C to 80°C
Terminal resistance, input	700±30Ω
Terminal resistance, output	700±10Ω
Insulation resistance bridge	2000MΩ
Excitation recommended	10V
Excitation maximum	15V
Safe overload	120% R.C.
Ultimate overload	200% R.O.
Cable length	Ø5mm 4core, 3m

> Model CS187

Pedal effort load cell
Small and light weight



>SPECIFICATIONS

Specifications	Accuracy
Rated capacity(R.C)	120kgf
Rated output(R.O)	1.2mV/V±1%
Nonlinearity	0.15% of R.O.
Hysteresis	0.15% of R.O.
Repeatability	0.15% of R.O.
Zero balance	±1% of R.O.
Temperature effect on rated output	±0.02% of LOAD/10°C
Temperature effect on zero balance	±0.02% of R.O./10°C
Temperature range, compensated	-10°C to 50°C
Terminal resistance, input	700±10Ω
Terminal resistance, output	700±5Ω
Insulation resistance bridge to ground	2000MΩ
Excitation recommended	10V
Safe overload	150% R.C.
Electrical connection	Ø3mm 4core, 40cm

★ Specifications are subject to change without notice.