

Digital Tachometer

RPM Sensor Magnet Type



> Model DN30W

RPM processor/tachometer (frequency input).
The setup sequence is simple and quick using four push buttons only.

- Relay output(Hi, Low)
- 4 Relay output
- Peak & sample hold
- Analog out (DAC)
- Modbus RTU protocol
- Calibration by Pulse/circle input

■ Option

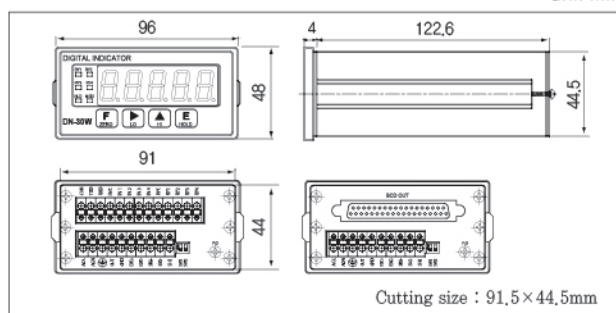
- OP-01 : Paralle BCD output
- OP-03 : RS485 Multi drop interface
- OP-10 : Power 24VDC

>SPECIFICATIONS

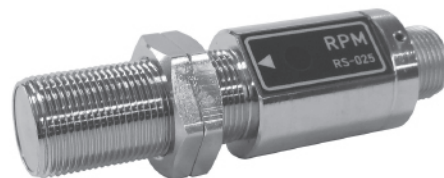
Specifications	Accuracy
Application sensor	Proximity sensor (MP981, RS-025)
Sensor authorized voltage	DC 12V
Measuring range	Input frequency 5kHz max, 1 ~ 350 pulse/circle
Measuring accuracy	0.05%
Display	0 ~ 99999
Minimum Display Unit	1 RPM
Character height	7 segment LED 5 Digit (14mm)
Analog output	DC 0 ~ 10V or 4 ~ 20mA (Selective use)
Relay output	Contact capacity : 250VAC/3VDC 3A Relay life time : Over 10 ⁷ , Over 10 ⁵ under the rated load
Usage temperature range	-10°C to 60°C
Humidity	Less than 80% RH (no dewing.)
Power source used	AC 90 ~ 240V 50/60Hz 8VA
Sizes	96×48×128mm
Panel cutting size	91.5×44.5mm
Weight	About 500 g

>DIMENSIONS

unit:mm



★Specifications are subject to change without notice.



> Model RS-025

The RS-025 is a magneto-type detector using a hall element which is suitable for rpm measurement from ultra low speed to high speeds.

>SPECIFICATIONS

Specifications	Accuracy
Detection method	Hall element
Measurement range	1Hz~20kHz(using a 60P/R gear, 1~20,000r/min, with an output waveform duty cycle 50%±20%)
Detection gear	Strong magnetic materials
Gap between detector and gear	modulus 0.5~3, tooth width 3 mm or greater
Power supply used	DC 12V±2V(0.5Vp-p or less ripple)
Current consumption	40mA or less(12V, at 25°C)
Output waveform	Low level; ±0.5V rectangular waveform(With no load)
Output impedance	Approx. 330Ω
Output type	Floating grouing
Protective circuit	Power supply polarity and output short protection
Operating temperature range	-10°C~+70°C
Storage temperature range	-20°C~+80°C
Matching connector	6-pin connector(type R04-PB6F plug)
Allowable vibration (during-operation)	Double-ended 1.2mm at 30Hz in X, Y and Z direction for one hour each.
Allowable shock(non-operating)	490m/s ² in X and Y direction each 3 times.
Withstand voltage	1.DC250V, 1min,(between shield and signal cable) 2.DC250V, 1min,(between shield and sensor head)
Interface indicator	DN-30W
Weight	Approx. 80g(including two mounting nuts)
Accessories	Mounting nuts(2)

>DIMENSIONS

unit:mm

